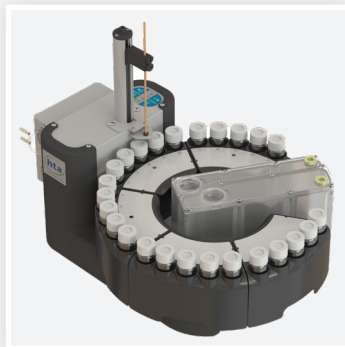
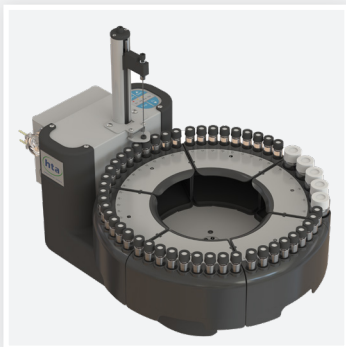
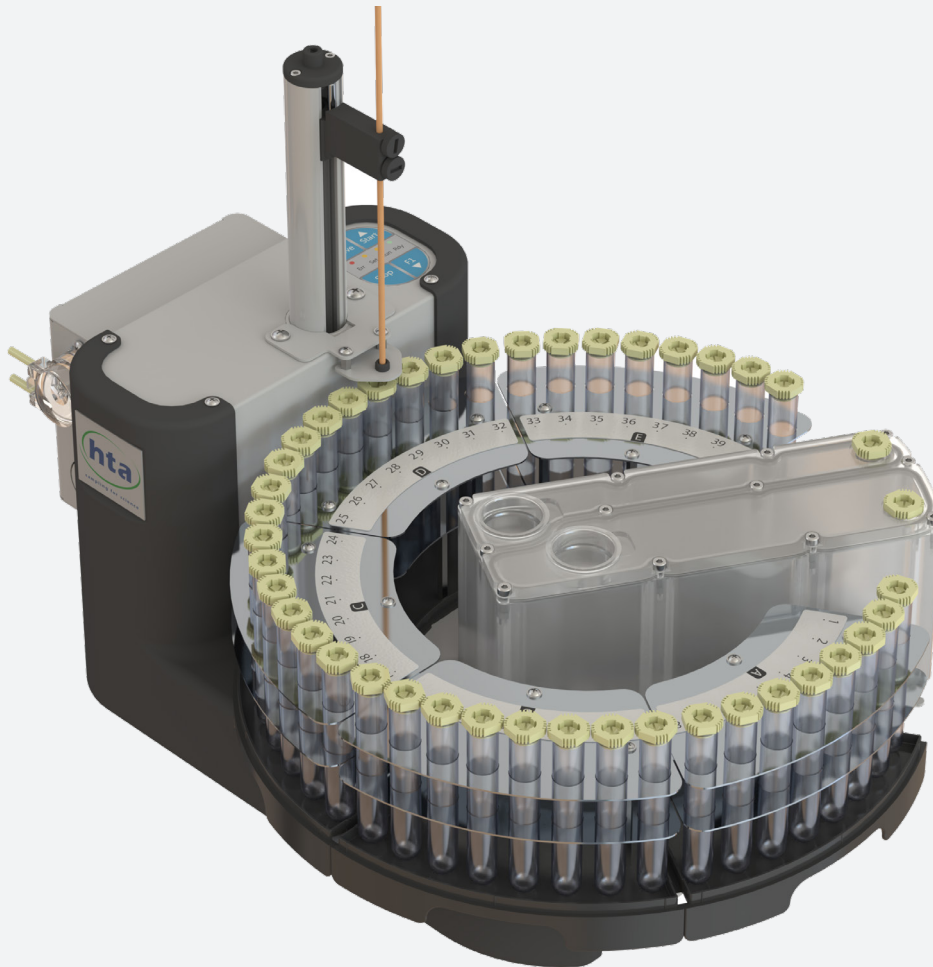




HT1500U FOR FTC

AUTOSAMPLER FOR FLOW-THROUGH-CELL

APPLICATIONS: UV-VIS, NIR, COLORIMETERS AND MORE



DESIGNED FOR FLOW-THROUGH-CELL APPLICATIONS

HT1500U can be used in a number of flow-through-cell (flow-through cuvette or quartz cell) applications such as: **UV-VIS, NIR, colorimeters** and many more. **HT1500U** potentially allows to avoid the need to source an expensive sipper representing the best choice for anyone who is looking for immediate automation for an FTC application.

Different configurations are available: **HT1500U** supports stainless steel as well as polymeric needles to deal with metal sensitive applications. Furthermore, a wide choice of fluidics is available to deal with **different sizes of flow through cells**, including also nano flow through cuvettes, micro cuvettes as well as macro cells.

KEY FEATURES:

- Different configurations available to fit your application
- Easy-To-Operate
- Removable racks for continuous feeding

HOW IT WORKS

Load your samples and press START button. The tray rotates and the arm with needle is aligned on top of the first sample tube to be processed.

The needle is inserted at the **programmable depth** where the sample is aspirated through the built-in pump and **delivered to the analyser**. Then, by using the on-board solvents, the needle and the whole flow-path are cleaned before processing the next sample.

HT1500U supports multiple racks – each of them removable - allowing for continuous feeding and convenient operations. The autosampler offers the capability to automate from 25 to 45 samples depending on size, and also includes additional positions for rinsing solvents. Both **open and sealed tubes** are supported to fit your workflow.

HT1500U comes with HTA Autosampler Manager (Standard Version), our complimentary software control for autosampler programming. After setting the method once, you **just need to load samples and press START** on the autosampler keypad. Several options are also available for the integration with different analyzers and - eventually - data acquisition software.

A REAL STEP FORWARD FOR YOUR LABORATORY

Beside **undoubted productivity boost**, **HT1500U** will increase your **analysis robustness** and will significantly **reduce carry-over**: you can indeed program as many washing cycles as you need for this purpose; sample replicas and calibration curve could be conveniently run whenever needed with no fuss.

Moreover **HT1500U** offers **sample recovery** option: for **precious samples**, it could automatically bring back the sample inside its original vessel after the analysis instead of displacing to the waste tank, allowing you to re-use the original sample for further analysis.

The autosampler is compatible with both push-to-fill and pull-to-fill sample introduction modes. In **push-to-fill mode**, the peristaltic pump will be connected to the inlet port of the analyzer; it will be located between the needle and the flow-through cell. In **pull-to-fill mode**, the peristaltic pump will be connected to the outlet port of the analyzer; it will be located between the flow-through-cell and the waste.

Using a cuvette?

If you are looking to increase your lab productivity, the first step you need to take is to **get a flow-through cell**. Many analysers that can hold a **quartz cuvette** have the option to hold a **flow-through cell**. This is the fundamental step to introduce automation to your analyser and thus **to enhance your daily samples' throughput**.

TECHNICAL SPECIFICATIONS

General features

| | |
|---------------------|-------------------------------|
| Rack: | 5, removable |
| Sample capacity: | |
| • HT1502U | 45 vials, 4ml |
| • HT1503U | 40 tubes, 10ml |
| • HT1504U | 25 vials, 40ml |
| • HT1505U | 40 tubes, 10ml |
| Maintenance: | preventive counters available |
| Electrical control: | USB and TTL |

Wash

| | |
|--------------------|--|
| Mode: | every injection/sample/step pre & post injection |
| Washing reagents: | |
| • HT1502U; HT1505U | 5 vials, 40ml |
| • HT1503U; HT1504U | 2 compartments, total capacity: 990ml |

Filling

| | |
|------------------|--------------|
| Sampling depth: | programmable |
| Sample cycles: | up to 9 |
| Sampling time: | programmable |
| Filling speed: | programmable |
| Viscosity delay: | 0-25s |

Injection

| | |
|-------|-----------|
| Mode: | Full loop |
|-------|-----------|

Physical features

| | |
|-----------------------------------|------------------------------|
| Dimensions (WxHxD) ¹ : | 355x380x520mm |
| Weight: | 7.5kg |
| Power supply: | 100-240±10%Vac; 50-60Hz; 60W |

Free software "HTA Autosampler Manager (Standard Version)" is provided for PC control; upgrade to "HTA Autosampler Manager (CFR 21 Part 11 Version)" should be purchased separately. PC is required for setup, service, method and sequence editing.

¹ Without accounting the transfer line

HTA s.r.l.

via del Mella, 77-79 - 25131 Brescia - ITALY
T: +39 030 3582920
www.hta-it.com | enquiry@hta-it.com



Distributed by: